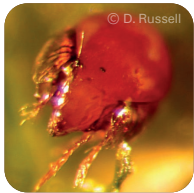




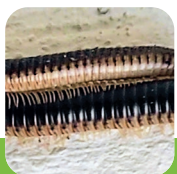
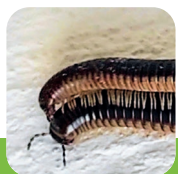
Soil biodiversity,  
and particularly soil fauna,  
drives essential soil functions  
leading to crucial  
ecosystem services



Many research activities have produced data,  
which are widely dispersed and not easily  
available. Their re-usability is limited

The Atlas aims to collate a maximum of  
available data on soil fauna (micro-, meso-  
and macrofauna) from the European territory  
to create the first comprehensive  
“European Atlas of Soil Fauna”

Read the published call:



Follow these steps to become a  
co-creator of the Atlas initiative!

**STEP 01 COMPLETE THE QUESTIONNAIRE**

The Atlas questionnaire gathers  
information on potential data providers.  
For the questionnaire you can scan the  
QR code at the bottom of this page.

**STEP 02 USE THE DATA TEMPLATE**

Upon agreeing to provide data for the Atlas,  
you will receive via e-mail a data template  
and instructions. You have to fill out the  
template and send it back within 2 months.

**STEP 03 YOUR DATA**

Your data will be reviewed and used for  
analysis and the creation of the Atlas maps.  
Upon consent, your data can also be up-  
loaded to the Edaphobase data warehouse.

**STEP 04 SOIL FAUNA MAPS**

The data set collection will allow the  
presentation of the current state of soil  
fauna distribution and its relationship to  
land use, soil characteristics and climate.

Scan here for **the questionnaire:**



# The European Atlas of Soil Fauna

A call for collaboration



Co-create the Atlas  
through data mobilization!



© T. Trakic

Help put soil animals  
on the map!  
Support conservation  
of soil biodiversity!

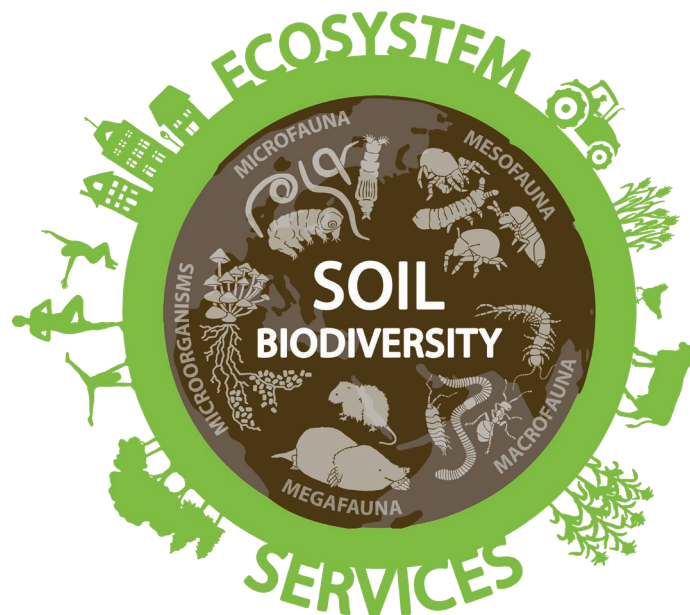
This call is based on work from the COST Action EUdaphobase (CA18237), supported by COST (European Cooperation in Science and Technology). COST (European Cooperation in Science and Technology) is a funding agency for research and innovation networks. Its Actions help connect research initiatives across Europe and enable scientists to grow their ideas by sharing them with their peers. This boosts their research, career and innovation.

[www.cost.eu](http://www.cost.eu)



## Data mobilization is a vibrant collaborative effort

“Data owners” become “co-creators” of the Atlas by contributing their soil fauna data to an overall European data set. The data set will be used to produce information and maps on soil fauna distribution and diversity across Europe, to support research, policy, education, conservation and monitoring activities.



### The Atlas will be published in open access

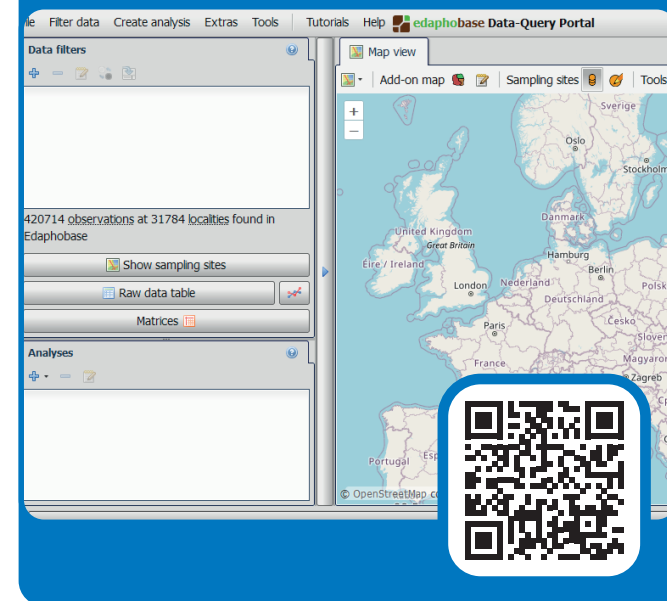
(e.g., CC-BY license), with the option of an online version for future updates.

We are, however, strongly committed to respecting and acknowledging the intellectual property rights of all data owners.



Subject to the consent of data owners, data will be uploaded to the publicly available soil-biodiversity data warehouse “Edaphobase”

Visit at <https://portal.edaphobase.org>



### Data owners can receive DOIs for specific data sets

- Make your data more accessible
- Increase the visibility of your research
- Data available in Edaphobase can also serve future data-analyses in research, monitoring, and decision-making