

United Kingdom

Representing institution:

**Department for Business,
Energy & Industrial Strategy (BEIS)**

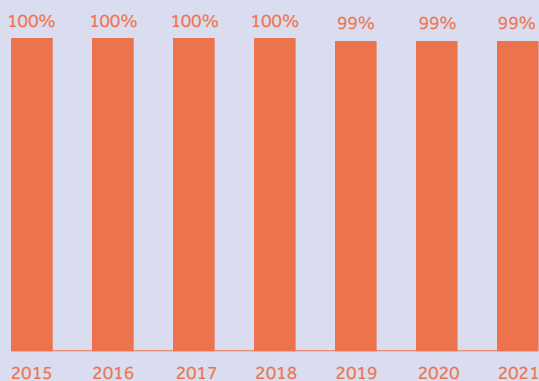


RUNNING ACTIONS LED BY UNITED KINGDOM

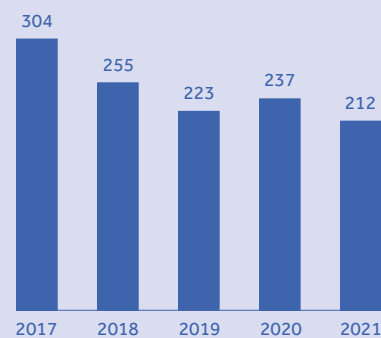
Examples of Chaired and Vice Chaired Actions

- European Network for Collaboration on Kidney Exchange Programmes
- European Network for Problematic Usage of the Internet
- Maximising Impact of research in NeuroDevelopmental DisorderS
- Realising the therapeutic potential of novel cardioprotective therapies
- Increasing understanding of alien species through citizen science
- Indoor Air Pollution Network
- Saving European Archaeology from the Digital Dark Age
- New approaches in detection of pathogens and aeroallergens
- The Core Outcome Measures for Food Allergy
- Traces as Research Agenda for Climate Change, Technology Studies, and Social Justice

COUNTRY REPRESENTATION IN COST ACTIONS

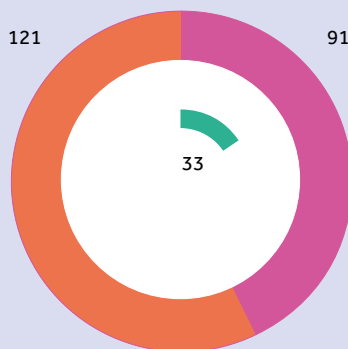


LEADERSHIP POSITIONS IN COST ACTIONS



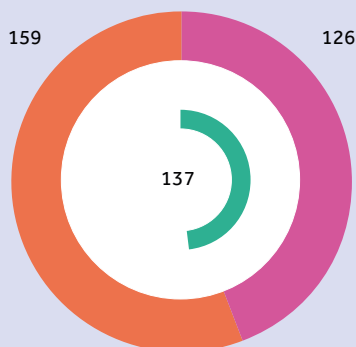
A CLOSE LOOK AT LEADERSHIP POSITIONS

● Women ● Men ● Young researchers



INDIVIDUAL PARTICIPATION IN ALL ACTION ACTIVITIES

● Women ● Men ● Young researchers



PARTICIPATION IN NETWORKING ACTIVITIES

35

Short-term scientific missions

43

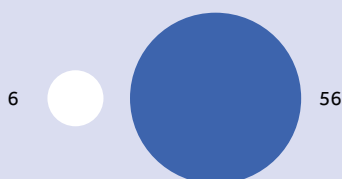
Trainees

9

Trainers

NETWORKING ACTIVITIES IN UNITED KINGDOM

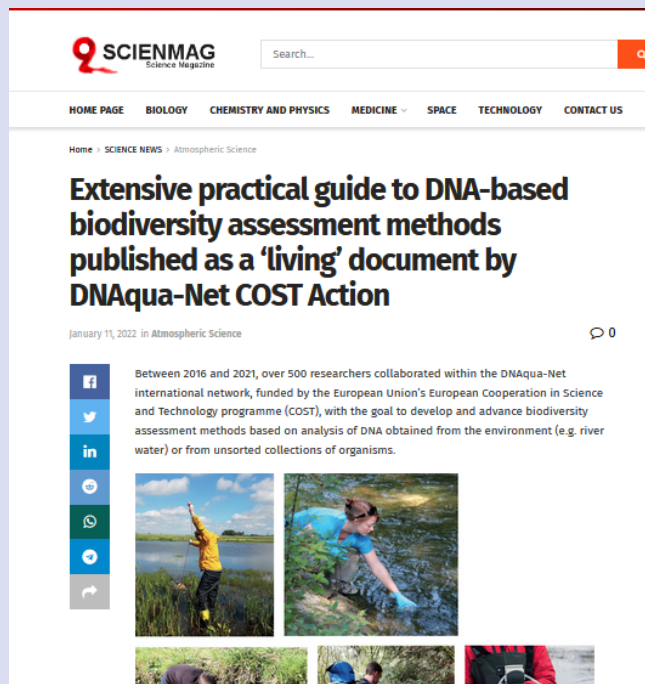
● Training schools
● Short-term scientific missions



BUDGET RECEIVED

€ 380,417.45

MAKING THE HEADLINES



CA15219 - Extensive practical guide to DNA-based biodiversity assessment methods (scienmag.com)

View the full story here: <https://bit.ly/3cillgR>



CA20105 - Climate and extinction crises move too slowly for us to pay attention – here's the answer (yahoo.com)

View the full story here: <https://yhoo.it/3pJbKct>



By nurturing a broad and diverse multidisciplinary network of experts, drawn from around Europe and the rest of the world, working alongside citizens groups including young people who are most at risk, this COST Action has considerably raised the profile of PUI among scientists and the public at large and advanced the understanding of this emerging public health problem at a global level.

Prof Naomi FINEBERG, Professor at University of Hertfordshire, Hatfield, Hertfordshire

