

NOABER
foundation

Research Related Venture Philanthropy

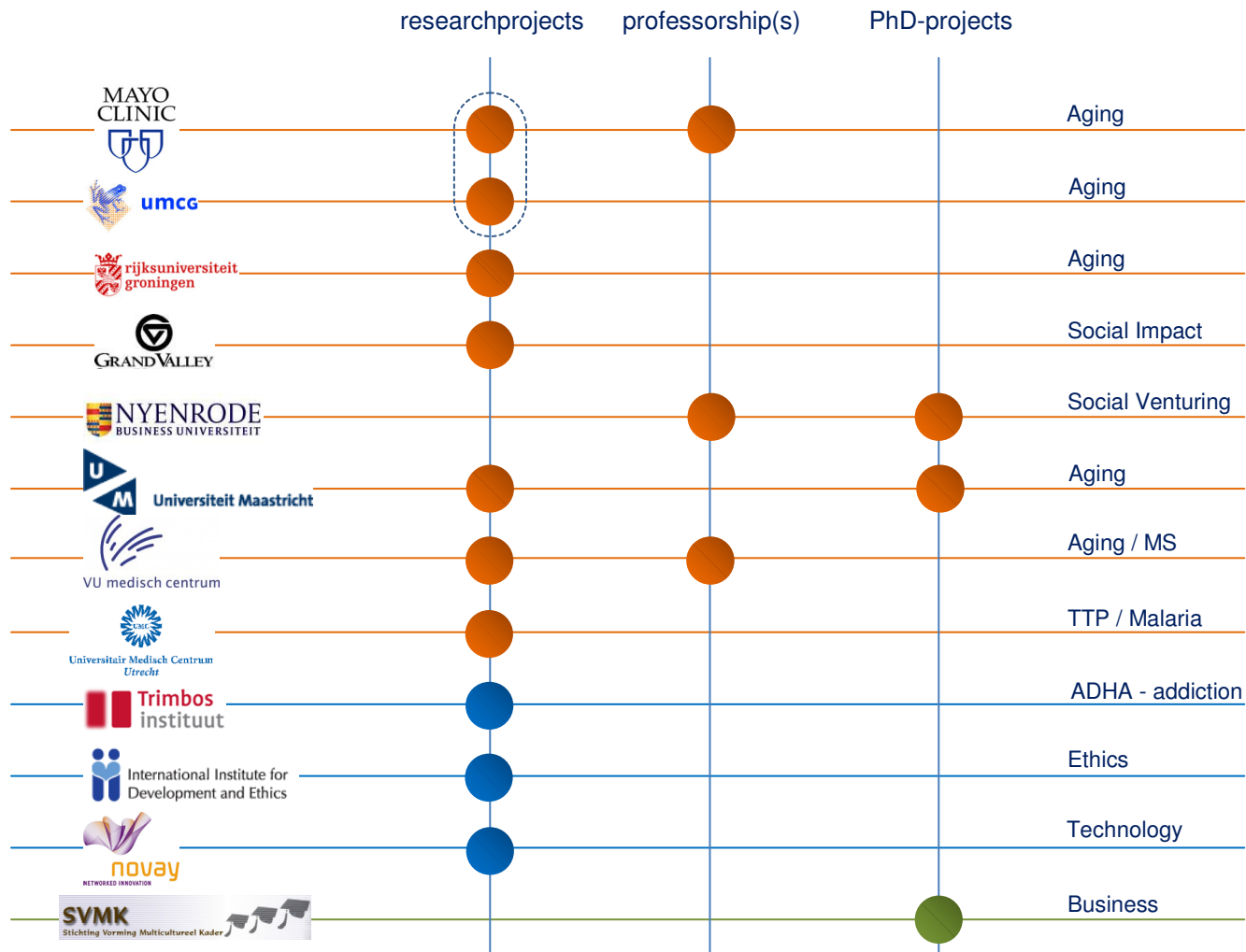
03 March 2010
Brussels

Wim Post
Program manager

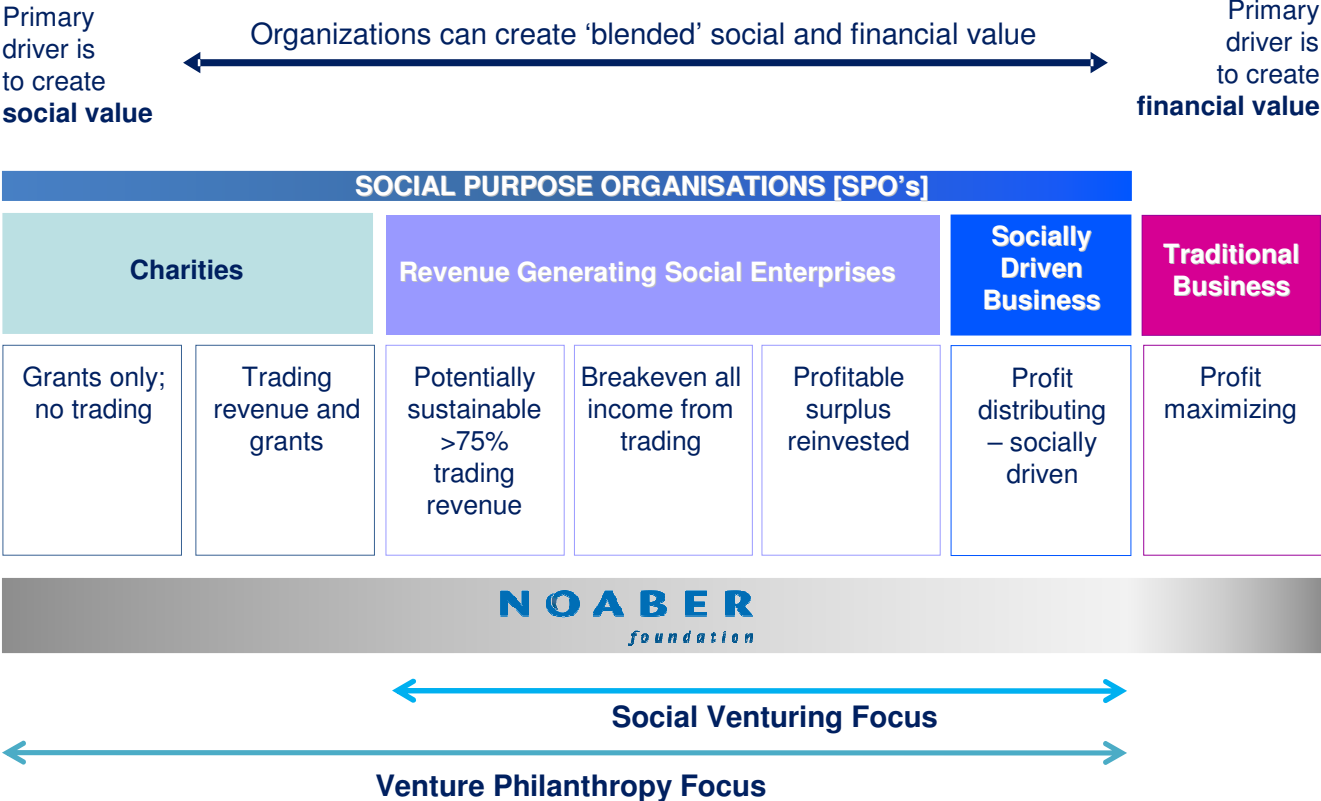
Noaber Foundation

- Dutch family foundation, founded 10 years ago
- **Venture Philanthropist** and Social Venturer
- Member of the European Venture Philanthropy Association (EVPA)
- Tailored Grants and Investments
- Aiming for **blended return** (social *and* financial return)
- Characteristics: risk-return *plus* impact
- 35 projects (**12 research (related)**)
- 30 investments (**3 research (related)**)
- Mission: to innovate entrepreneurial 'neighbourship' (= noabership)
- Focus: **Health and Care**, Education, Culture and Community
- Interest: applied (information and communication) technology
- Tools: criteria, checklists, social e-evaluator™, standard operating procedures
- Serviced by **Shærpa** (service organization)

research (related) portfolio



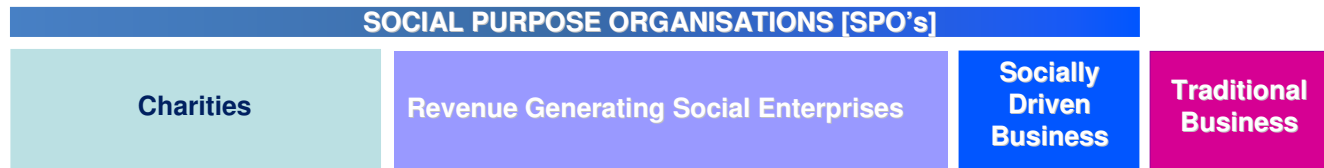
vp-spectrum



background

- Identification of areas of importance and interest: **health and care**
- Investigation of themes with experts:
 - Demographic double **aging** process:
 - Consequences for the demand and supply of care
 - Challenges of applying technology to reduce the gap
 - Need for acceleration of innovations
 - Market-orientation: **social venturing**
- Noaber's initiative and support to start a partner network organization: **VitaValley**
- 15 partners:
 - Care
 - Technology
 - Research (e.g. universities and institutes)
- Activities: Projects-Consultancy- Social Investments

cases



Alliance for Healthy Aging

1

Alliance of three organizations (two universities/hospitals and one partner network organization) aiming for accelerating research on aging from 'bench' (basic research) via translational research to 'bed' (applied technologies).

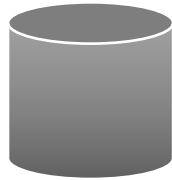
NIPED

2

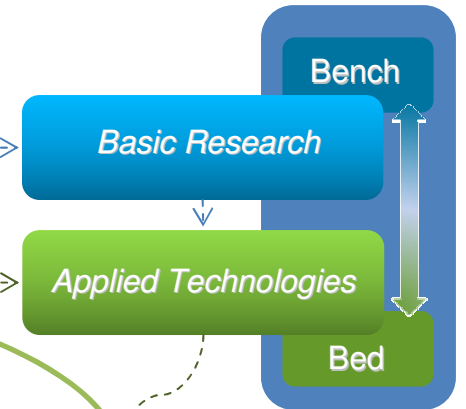
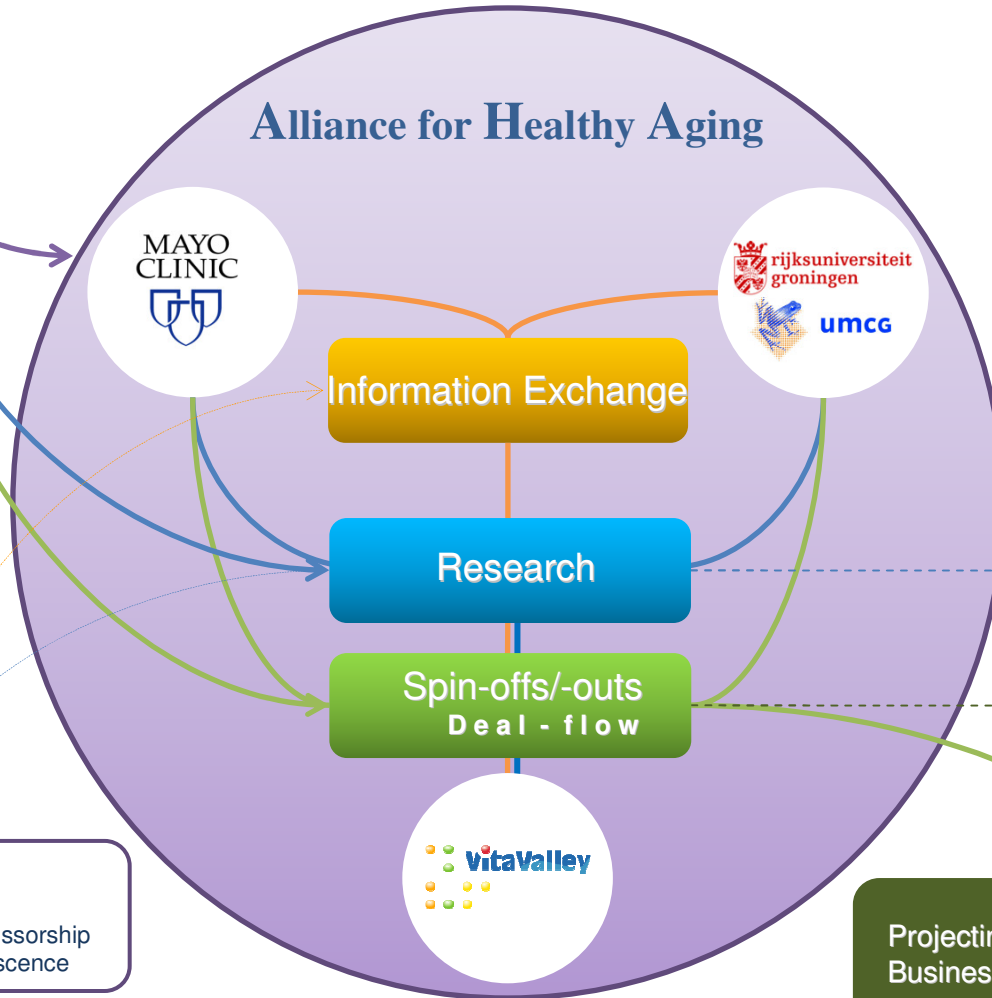
SPO offering a scientific approach for integrated prevention and early diagnosis of diseases, based on a personalized risk profiling system.

Alliance for Healthy Aging

BLENDED CAPITAL FUND
(BEYOND TRADITIONAL RETURNS)
IMPACT+RETURN+RISK

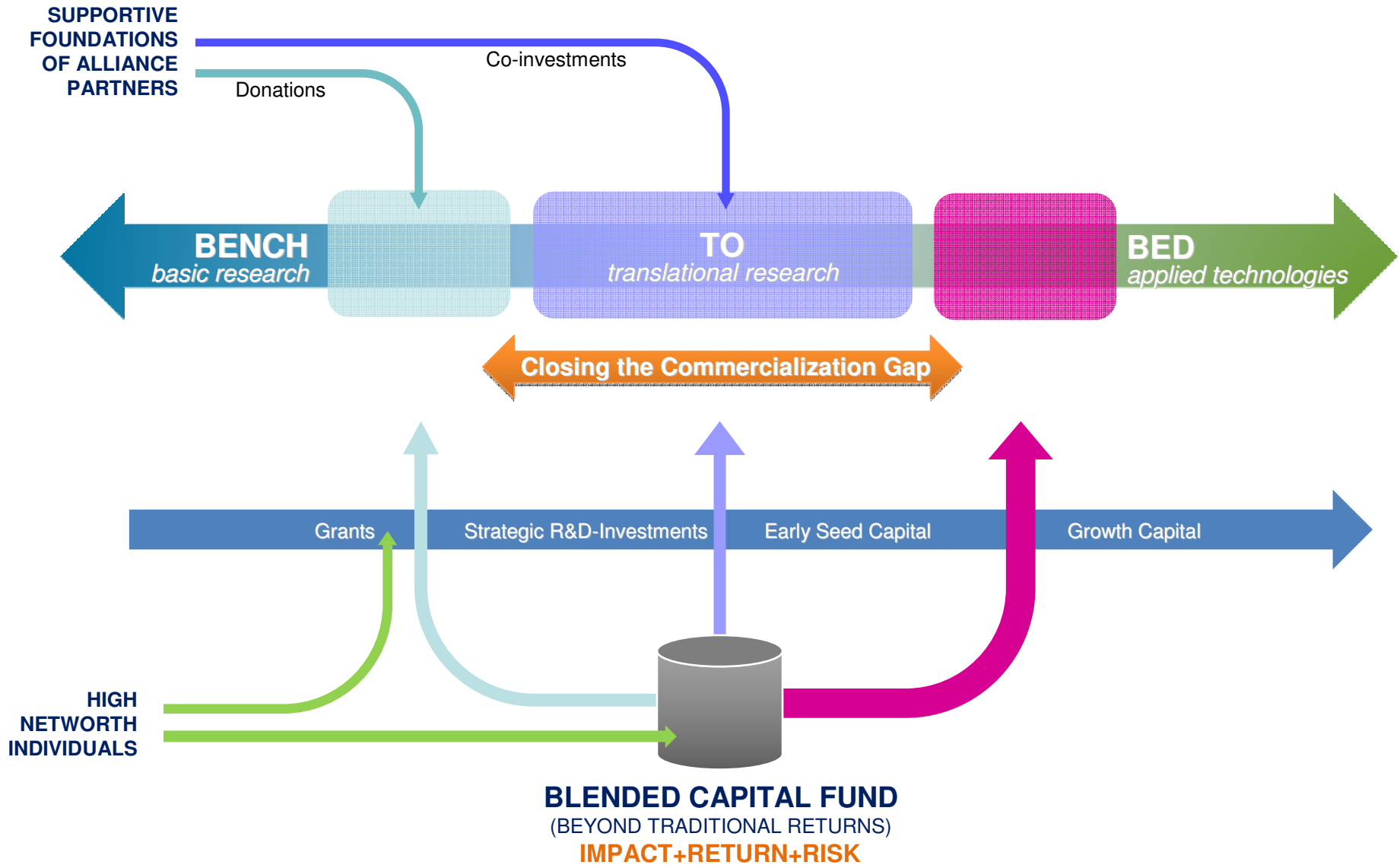


Enabling to Collaborate



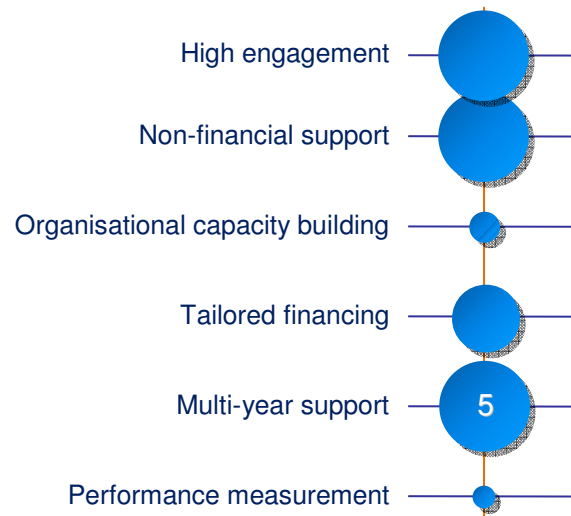
Projectinvestments
Business Venture Opportunities

Alliance for Healthy Aging



Alliance for Healthy Aging

NOABER
foundation



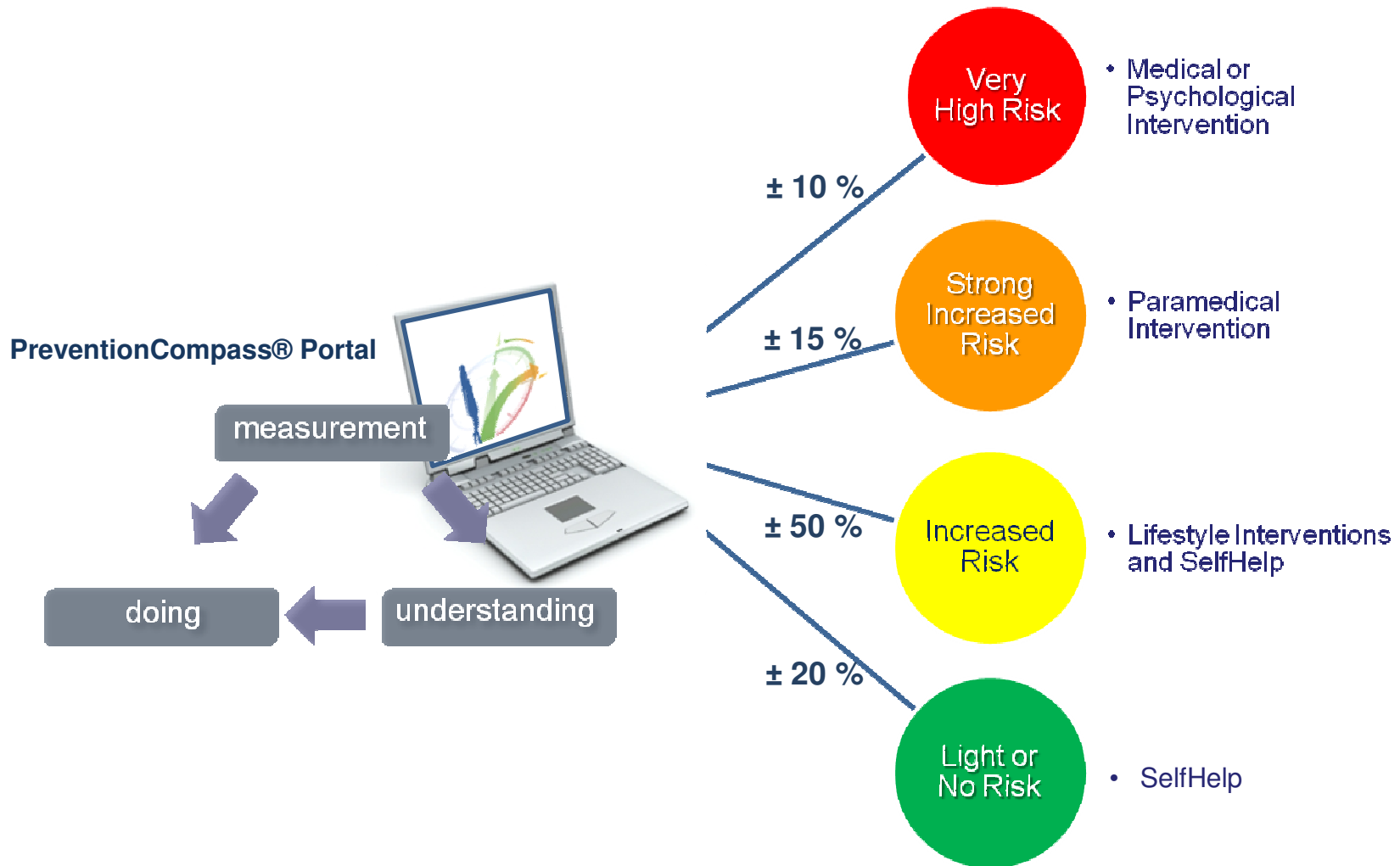
- initiator of the Alliance
- introduction into networks
- initiator of the investment vehicles
- developer of the investment-models
- grantmaker
- investor
- steering committee seats

NIPED

- **Spin-off** from research institute (oncology)
- **Knowledge system** for Integral Health Management
- **Integrated approach** (lifestyle, medical, psychological)
- Individual **risk profiling** concept as basis
- Application of multiple disease specific **risk algorithms**
- **Computerized connection** to medical guidelines, test thresholds and best-practice lifestyle interventions
- **Dynamic guideline** development
- **PreventionCompass®** as central tool

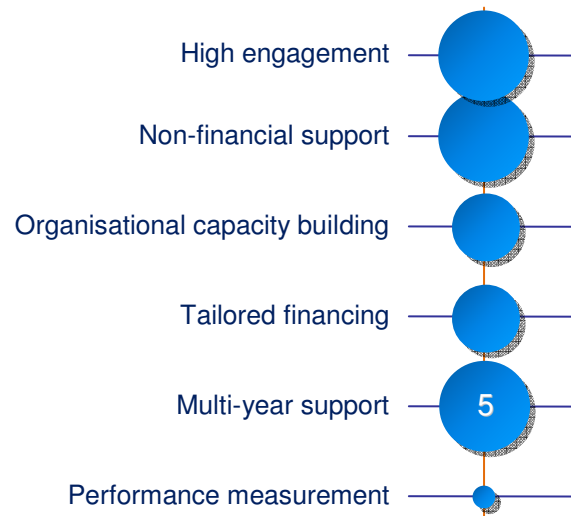


NIPED



NIPED

NOABER foundation



- supervisory board seat
- long term view investor
- structuring financing round 2 and 3
- support strategic orientation internationally
- coached to get to management reporting
- driving force to get to impact measurement

NOABER
foundation

Dorpsstraat 14
6741 AK Lunteren
The Netherlands

+31 (0)318 59 64 00

poostlander@noaber.com

[director]

akoning@noaber.com

[program manager]

wpost@noaber.com

[program manager]