

The Research Executive Agency (REA)

**COST Seminar on the Activities
of the Research Executive Agency**

Brussels, 8 October 2009

Traditional agencies

- Created through regulation of Council alone or Council and Parliament
- Diverse activities:
 - Adopt binding rules (e.g. Office for the harmonisation of the internal market)
 - Provide assistance (e.g. European Food Safety Authority)
 - Networking (e.g. European Network and Information Security Agency)

Executive agencies

- Created by Commission decision (after consultation of the regulatory committee for executive agencies, and information to the Parliament) in line with a Council regulation (EC) 58/2003
- Standard activities:
 - Implement programmes of the Commission
 - Operational tasks only – no policy role
 - Lifetime of the programme concerned only (renewable if the programme is renewed)

Other devolved bodies (Joint undertakings)

- Regulations of Council / Council & Parliament
- JTIs; ITER; Article 169; EIT

Agencies and Joint Undertakings in FP7

- Research Executive Agency (EC/2008/46 of 14 December 2007)
- European Research Council Executive Agency (EC/2008/37 of 14 December 2007)
- JTIs
 - IMI - Innovative Medicines Initiative
 - Clean Sky
 - ARTEMIS – Advanced Research and Technology for Embedded Intelligence and Systems
 - ENIAC – Nanoelectronics
 - FCH – Fuel cells and Hydrogen

Agencies and Joint Undertakings in FP7

- Article 169 initiatives
 - AAL – Ambient Assisted Living
 - EUROSTARS – Research Performing SMEs
 - EMRP – European Metrology Research Programme
 - BONUS – Baltic Sea Research Programme
- Joint undertaking under the EURATOM treaty
 - ITER – Fusion for Energy
- EIT is part of Education and Culture Directorate General – EAC

Reasons for creating executive agencies

- Constant staff numbers in the financial perspective 2007 to 2013
- Explosion in FP budget after 2010
- New areas to manage within FP7
- Professionalise programme management
- Staffing stability

Overview of the Research Executive Agency (REA)

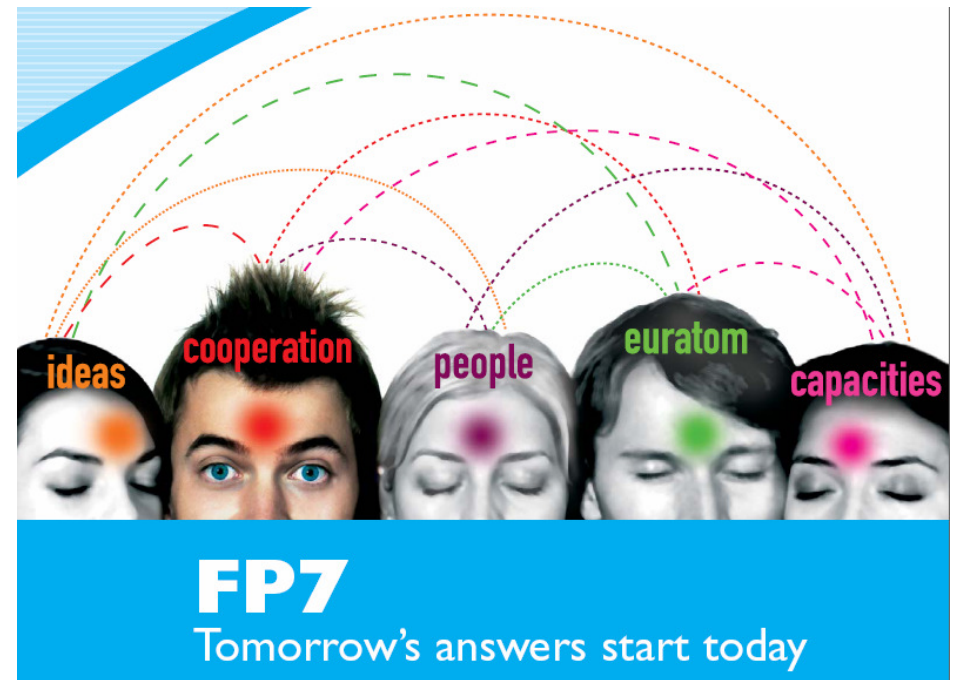


- Located in Brussels
- Total budget managed: € 6.5 billion
- 2008 – 2017
 - Lifetime of FP7 (to 2013), then a run down to 2017 of projects under management
 - Reviewed every three years
 - Potential to extend after FP7

REA – Tasks (1)

The REA will directly implement these parts of FP7:

- People programme
 - Marie-Curie Actions (€ 4 billion)
- Cooperation programme
 - Security and Space themes (DG ENTR, € 1.4 billion)
- Capacities programme
 - Research for the benefit of SMEs (€ 1 billion)



REA – Tasks (2)

The REA will provide “horizontal” services across the three specific programmes Cooperation, People, Capacities, i.e.:

- Run the **evaluation facility** in the Covent Garden building, Place Rogier (“COV”)
- Provide a **central service for contracting and paying external expert** evaluators
- Provide services for the **URF (unique registration facility)** and legal and financial viability service
- Run the central **FP7 enquiry service**

Transfer of tasks

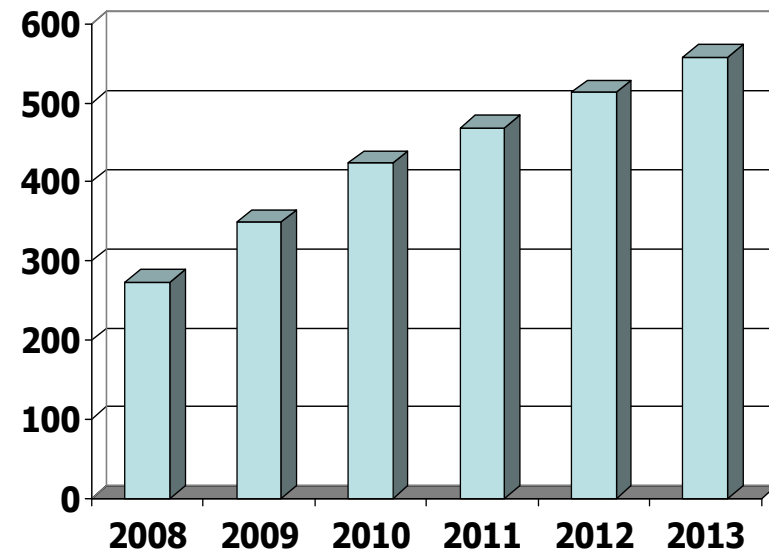
- All policy remains within the Commission
- Legacy contract management will also remain within the Commission (REA mandate only covers FP7)
- DG RTD/T, ENTR/H and the REA worked side-by-side during initial phase
- Since 15 June 2009 the REA has taken over full implementation of new calls and projects

Current status

- Very rapid expansion phase
- 300 staff on 16 October 2009
- Settled into new building (“COV2” in Place Rogier)
- Staff working alongside RTD and ENTR teams
- Autonomy : 15 June 2009

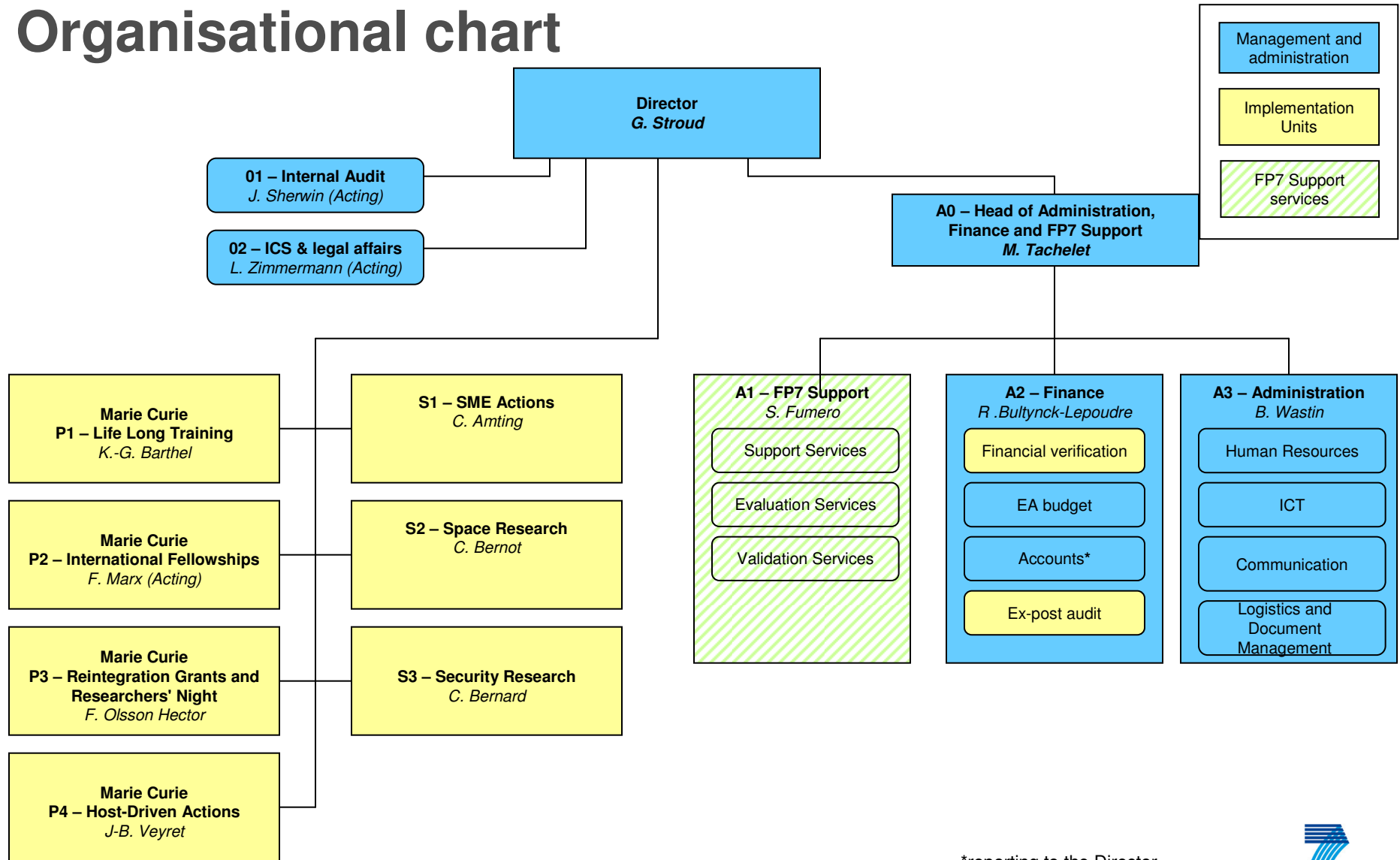
Staffing of the REA

- Maximum 558 staff by 2013
 - 274 in 2008
 - 349 in 2009
 - 424 in 2010
 - 468 in 2011
 - 513 in 2012
 - 558 in 2013



- Staff profile: 75% contractual agents; 25% temporary agents; maximum of 27 seconded from the Commission

Organisational chart



*reporting to the Director

Transfer of activities

- Conditions for Autonomy
 - steering committee, director, accounting officer and staff to manage the administrative and operational appropriations;
 - the parent DGs must ascertain that the agency has its own internal control, accounts and administrative procedures;
 - administrative budget must have been adopted and it must have its own bank account.
- Training and interaction RTD/ENTR and REA
- Physical handover of files
- Transfer of administrative budget and operational budget lines

Transfer of activities

- Formal documentation for handover
 - Readiness of Agency
 - Agreement of the DGs
 - Agreement of the Steering Committee
 - Handover file for tasks to be managed by agency
 - Memorandum of understanding
- Amendment letters to ongoing contracts (3000+)

Interface with the community

- Part of the FP7 identity
 - Autonomous not independent
 - Separate legal entity, owned by the Commission
 - Part of the Commission's systems: publishing of WPs; submission of proposals; publicity of projects
 - Uses Europa and Cordis web systems
 - Transfer should be seamless to the research communities and others

Interface with the community

- Evaluation systems and the Unique Registration Facility
 - Only manages three specific programmes (Cooperation; Capacities; People)
 - Other parts of FP7/non-FP7 programmes managed by RTD
 - Should be seamless to the research communities and other users

Interface with the community

- Efficiency gains in management
 - Confirmed by a recent Court of Auditors' report on agencies
 - Shorter times to grant
 - Faster response to questions

Future prospects

- All agencies and joint undertakings linked to the Framework Programme – budget to 2013
 - Allowance for the running down of activities until 2017
 - Except ITER – 35 years
- However,
 - If successful, potential to renew
 - If successful, potential to expand
- Political decision
 - Council and Parliament

Websites

- Research Executive Agency (REA)
<http://ec.europa.eu/research/rea/>
- European Research Council Executive agency (ERCEA)
<http://erc.europa.eu/>
- Community Agencies
<http://europa.eu/agencies/>
- FP7
http://ec.europa.eu/research/fp7/index_en.cfm

Contacts



<http://ec.europa.eu/research/rea>



REA-INFO@ec.europa.eu



COV2 ▪ 1049 Brussels ▪ Belgium
16 Place Rogier ▪ 1210 Brussels



+32-2-299 11 11



+32-2-297 96 09

