



# COST General Presentation

**Dr Monica Dietl, Director COST Office**

February 2012



# COST Mission

## Building the ERA



- Enhance research progress through creation of new international networks
- Connect scientists with policy-makers, governmental + regulatory bodies
- Foster innovation through technology transfer (academia, spin-offs, industry)
- Build capacity through inclusive participation (trans-disciplinary)



# COST in Figures

- Established in 1971
- 19 countries → now 36 + 4 reciprocal agreements
- 850+ COST Actions (269 in 2010)
- 0.42% (210 MEUR of FP7) or 0.49% (250 MEUR)





# COST Features

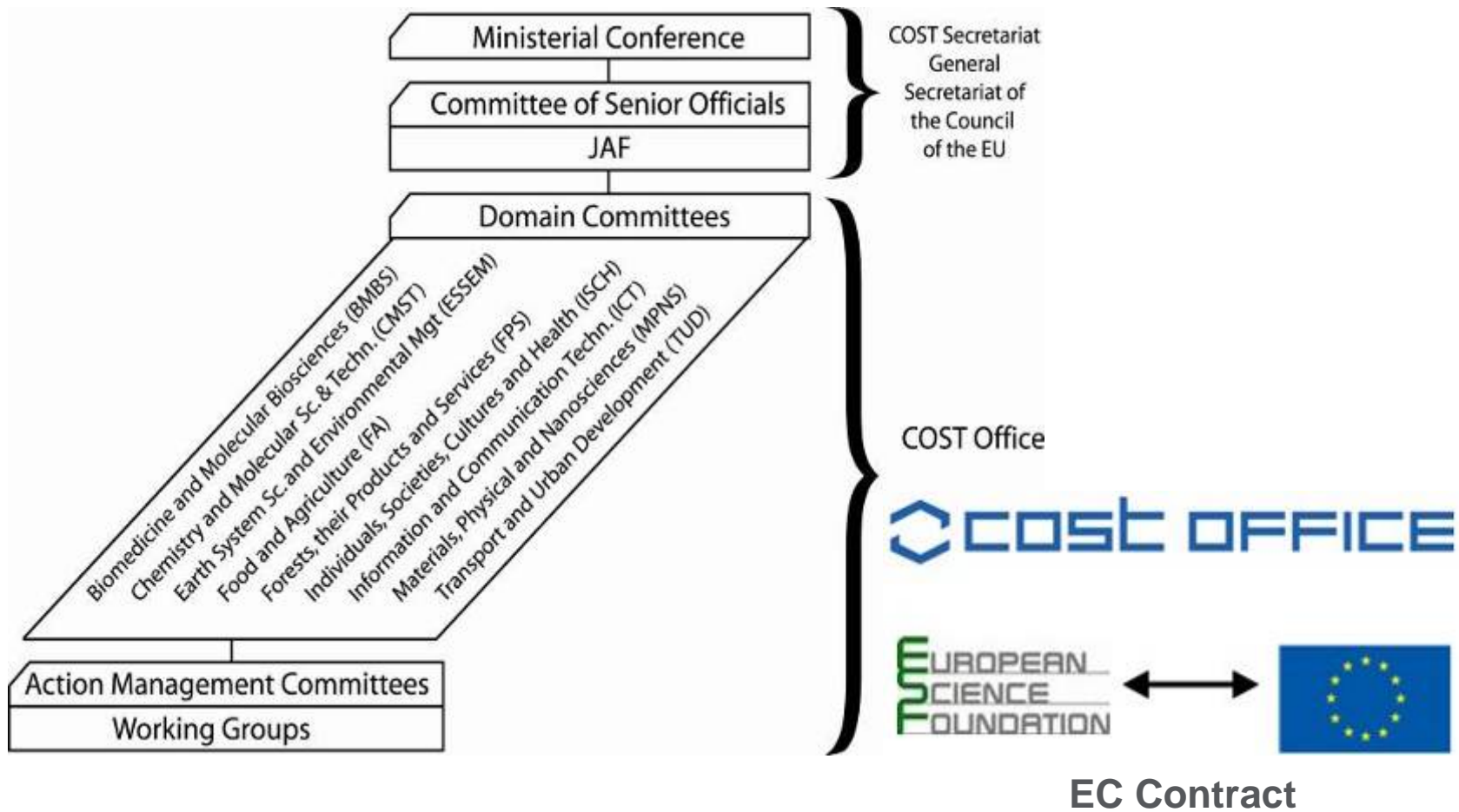
- Open to global cooperation  
- mutual interest
- Enabling Early Stage Researchers
- Pan-European - intergovernmental
- Light-weight administration
- Flexible implementation



# COST Features

- Science driven topics “Bottom-up”
- Inclusive - à la carte participation
- Bridging research communities – multidisciplinary
- Coordinating national research funding
- Public utility - pre-normative research
- Pre-competitive - technology - industry

# COST Structure





# COST Countries



## ■ The 27 EU Member States

## ■ EU Acceding & Candidate Countries

- ▶ Croatia
- ▶ Former Yugoslav Republic of Macedonia
- ▶ Iceland
- ▶ Turkey

## ■ Other Countries

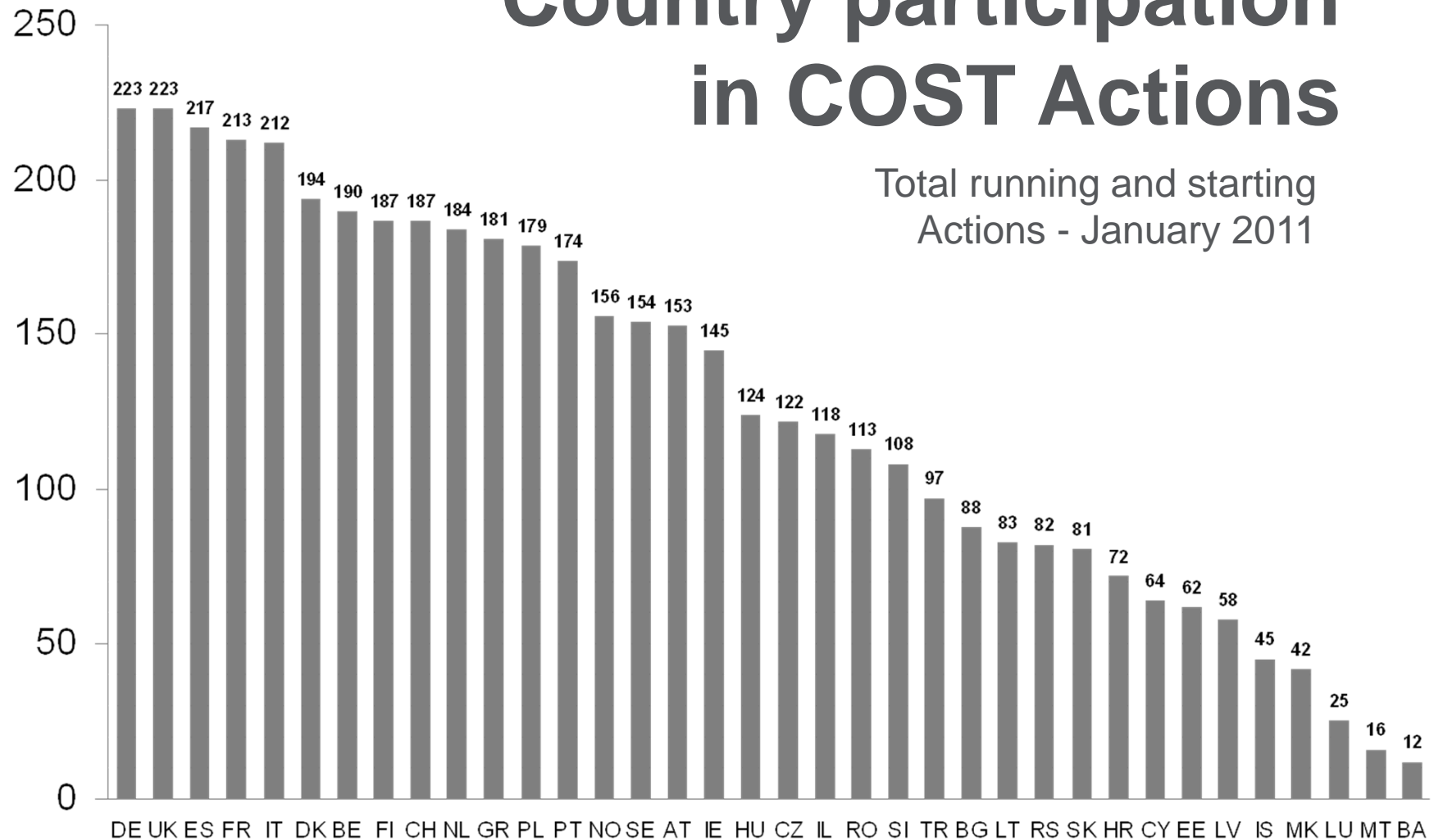
- ▶ Bosnia and Herzegovina
- ▶ Republic of Serbia
- ▶ Norway
- ▶ Switzerland

## ■ COST Cooperating States

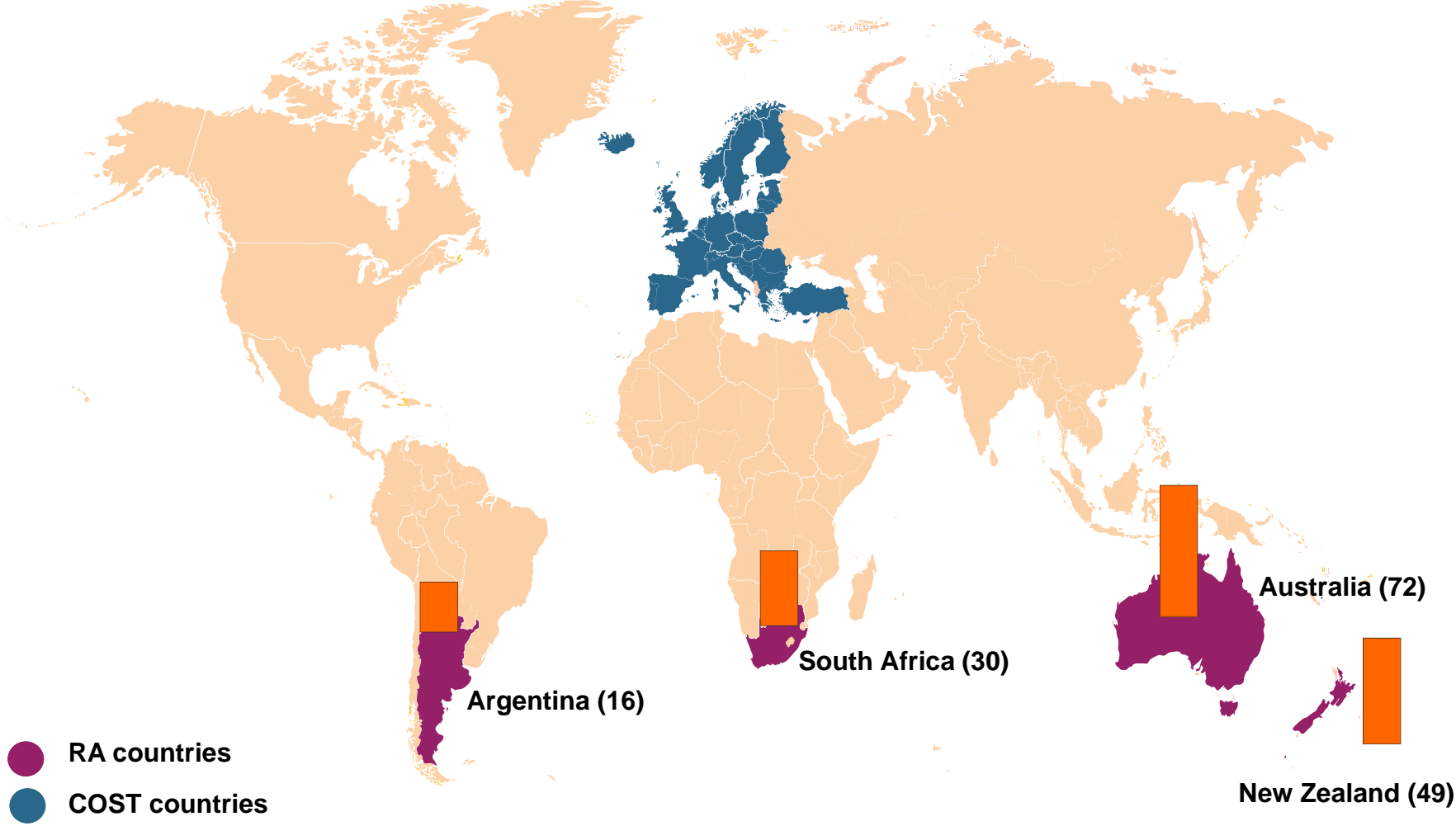
- ▶ Israel

# Country participation in COST Actions

Total running and starting  
Actions - January 2011

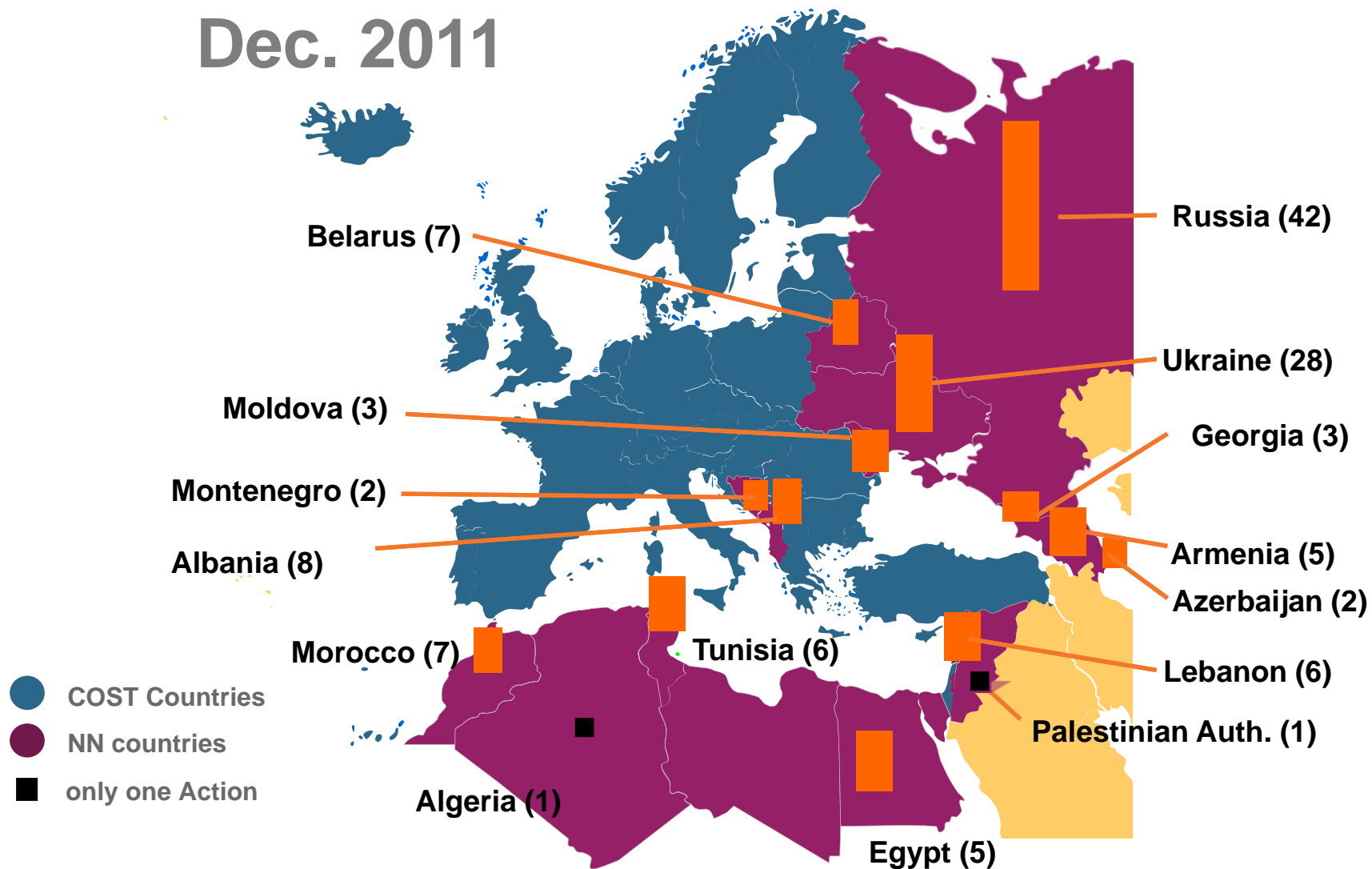


# Reciprocal Agreements (RA) Participation to Actions 2011



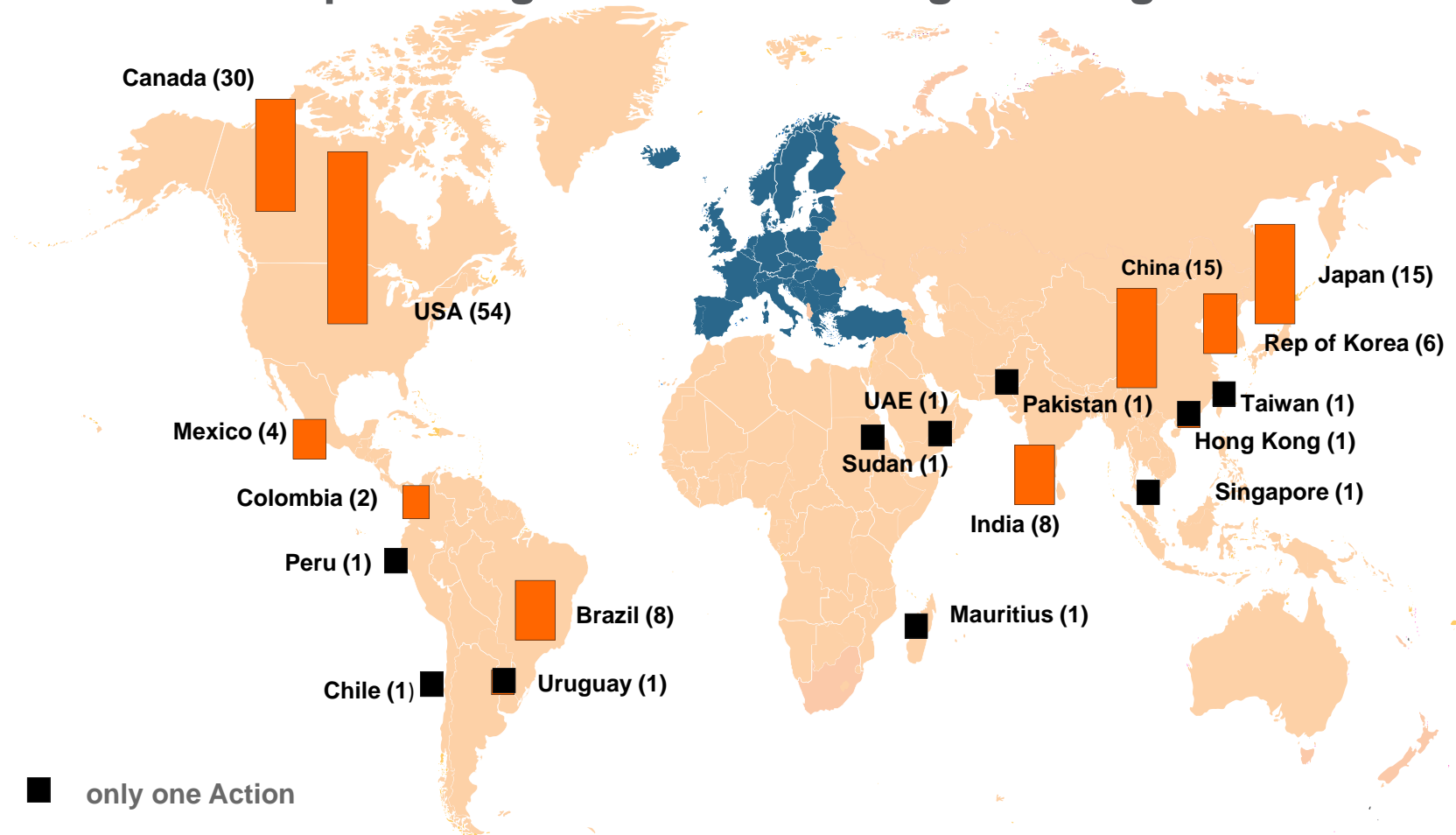
# Neighbouring Countries participation

## Dec. 2011



# Non-COST Countries

Participation to COST Actions 2011 excluding Reciprocal Agreements and Neighbouring Countries



■ only one Action

● COST Countries

151 Participations in 122 running Actions (18 countries) Dec 2011



# COST – Statistics 2010



- 269 COST Actions
- > 1000 scientific workshops and meetings > 30 000 participants
- 1250 STSMs ~ 3 weeks
- > 90 Training Schools > 1200 participants
- > 100 high ranking publications



# COST Action

- At least 5 countries
- Expanding networks
- Average 20 countries
- Across 9 Domains or interdisciplinary
- Obtains funds for networking activities

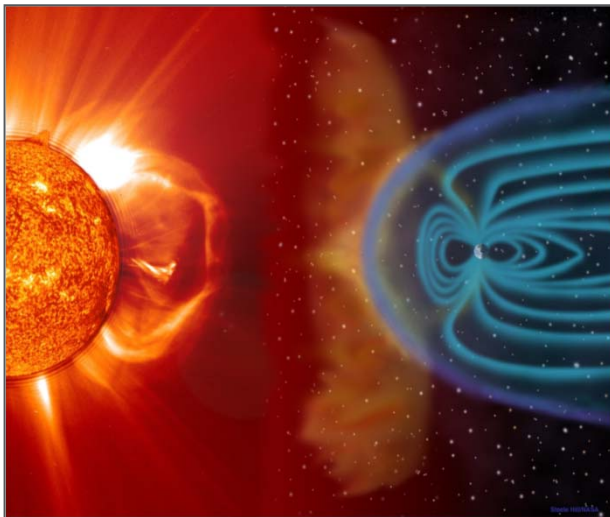




# COST Action activities

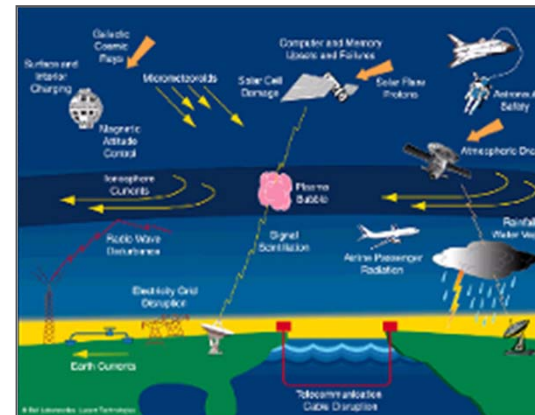
- Science management meetings
- Working Group meetings
- Scientific workshops & seminars
- Training schools
- Scientific Exchange Visits (STSMs)
- Dissemination + publications
- Exploratory + strategic Workshops

# Developing space weather products and services in Europe



- Near real time space weather information

- COST Action ES0803
- Develop reliable European Space Weather forecasts



# European procedures for flood frequency estimation (FloodFreq)



- COST Action ES0901

- Compile dataset and inventories of existing data and methods
- Use of statistical methods for flood frequency estimation
- Flood frequency analysis using rainfall-runoff methods
- Flood frequency estimation methods and environmental change

# Euroberry Research: from Genomics to Sustainable Production, Quality & Health



- Berry production is economically significant
- COST helped berry growers to **grow**
- Specific thematic area has been included in FP7

- COST Action 863

■ COST Action 219 ter

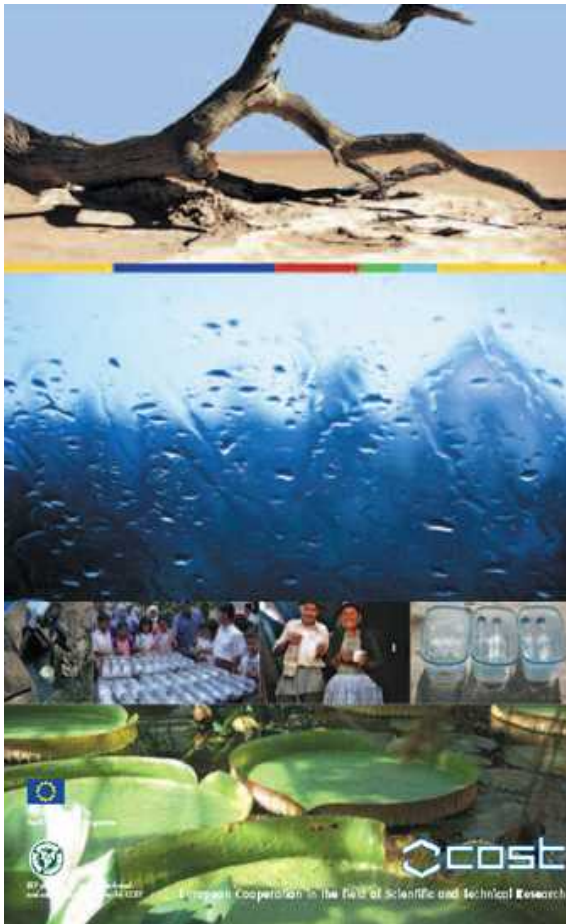


## How new telecommunications can benefit people with disabilities

- Accessible communication infrastructure
- Smart houses
- Equipment design



## Sunshine makes water safer to drink



- Radiation Damage in Biomolecular Systems
- Solar Disinfection (SODIS)
- 1 Mio Bacteria to 0
- EU Millennium Development Goals
- EU Water Initiative (EUWI)
- World Summit on Sustainable Development (WSSD) Implementation Plan



# COST Vision



- Develop into THE research networking instrument for the ERA
  - Bottom-up – complementary to EU FP
  - Trans-disciplinary – stimulate innovative research
  - Pre-competitive – attractive for companies
  - Flexible – suit researchers' creativity
  - International – open to the world
  - Strategic – connect with member states' strategies (JPIs, early weak signals)
  - Efficient – best practice in network funding
  - Inclusive – entry for ESRs, à la carte participation



# COST Office

i.e. scientific and technical secretariat to the COST Programme



- Science activities:
  - Domain Committees
  - COST Actions
- Outreach and strategic activities:
  - Year of visibility 2011



# www.cost.eu

Domain pages: e.g.

[www.cost.eu/bmbs](http://www.cost.eu/bmbs)

Open Call:

[www.cost.eu/opencall](http://www.cost.eu/opencall)

Guidelines:

[www.cost.eu/guidelines](http://www.cost.eu/guidelines)

FAQ:

[www.cost.eu/service/faq](http://www.cost.eu/service/faq)

Reciprocal Agreements:

[www.cost.eu/about\\_cost/reciprocal\\_agreements](http://www.cost.eu/about_cost/reciprocal_agreements)

Library:

[www.cost.eu/library](http://www.cost.eu/library)

Events:

[www.cost.eu/events](http://www.cost.eu/events)



COST News by e-mail?  
Sign up at <http://www.cost.eu/notification>



[http://www.facebook.com/  
COST.Programme](http://www.facebook.com/COST.Programme)



<http://twitter.com/COSToffice>



[http://www.linkedin.com/  
groupRegistration?gid=1699127](http://www.linkedin.com/groupRegistration?gid=1699127)

COST Office  
Avenue Louise 149  
1050 Brussels, Belgium  
T: +32 (0)2 533 3800  
F: +32 (0)2 533 3890  
[office@cost.eu](mailto:office@cost.eu)

[www.cost.eu](http://www.cost.eu)